

cane

plexus

Company Profile

design



INDEX

| | |
|-------------------------|----|
| PROFILE | 04 |
| KNOW HOW | 06 |
| PRODUCTS | 08 |
| CASE STUDIES | 16 |
| INDICATIVE APPLICATIONS | 38 |

“Smart” architectural and decoration solutions with the use of natural building materials

Caneplexus has over 25 years of experience in the field of building materials and decoration.

This translates into an important experience ensuring the thorough know-how through which emerge targeted solutions for the creation of each space, making the company a key partner of prominent architects, decorators and demanding projects.

The collection of Caneplexus includes panels from bamboo, willow, branches, foliage, tissues of natural materials, handmade weaves, wallpapers lined with natural materials, imported from their countries of origin, in a wide variety of qualities and types. The materials are continuously enriched in new forms and types.

Excellent value-for-money, responsible customer service, high-level consulting, eco-consciousness and design-construction quality make up the key elements supporting Caneplexus's relationship of trust with its partners and those features that outline the ideal profile of a company with international activity and continuous development of its services.

Quality and Certifications

All Caneplexus products are of selective cultivation, specific harvest time, natural drying and hot air drying when necessary. For each one of them, the quality control is carried out by local partners while being subjected to phytopathological inspection before and during import. The company is ISO 9001:2015 and ISO 14001:2015 certified by BQC.

75% of Caneplexus's natural materials are FSC® certified. The wallpapers have a certificate for fire retardancy or waterproofing.





Architecture and decoration

Today, Caneplexus processes, manufactures and markets a wide range of options in natural building materials. At the same time, the company's tremendous know-how and experience translates into a powerful portfolio of pioneering projects, enjoying a strong acceptance from the community of architects and designers. In recent years Caneplexus has contributed with its products and know-how to the realisation of projects such as Accor, Aman Zoe, Athens Marriot, Atlantica Group, Axia resorts, BlueGr hotels, Brain hotels, Caravia beach, Cavo Tagoo, Chc hotels, Domes Resorts, Elounda hotels, Epitome Canaves Oia, Four seasons, Four Seasons Astir Palace, Grecotel Hotels & Resorts, Ikos international, Ikos Hotels & Resorts, Intercontinental, Hellinikon project, Hilton hotels, Hyatt hotels, Melia hotels international, Mitsis hotels, Nammos group, One & Only, Paris Society International, Phaea hotels, Radisson, Sani Hotels, Scorpis beach, Swot hospitality, Temes sa (Costa Navarino Westin-Mandarin-Navarino Dunes Bay-The Ilisian Conrad), Xenos Hotels Olea, Zeus international, Zuma Rest.

The company's progress in the market through the materials and services provided has brought new trends and created a number of stimuli and has established itself in the sector's consciousness as a credible and innovative company for the promotion of purely natural building materials.

Human Resources and Infrastructure

Caneplexus's steadily expanding progress is based largely on its skilled human resources and its nationwide network of long-term partners. Additionally, the company has storage facilities, ensuring the fastest possible delivery.

Our Products





Handwoven mats



Wallpapers by natural fibers



Panels



Willows



Bamboo



Branches



Leaves



Reeds



Umbrellas



Fabrics by natural fibers



Poles





Case Studies



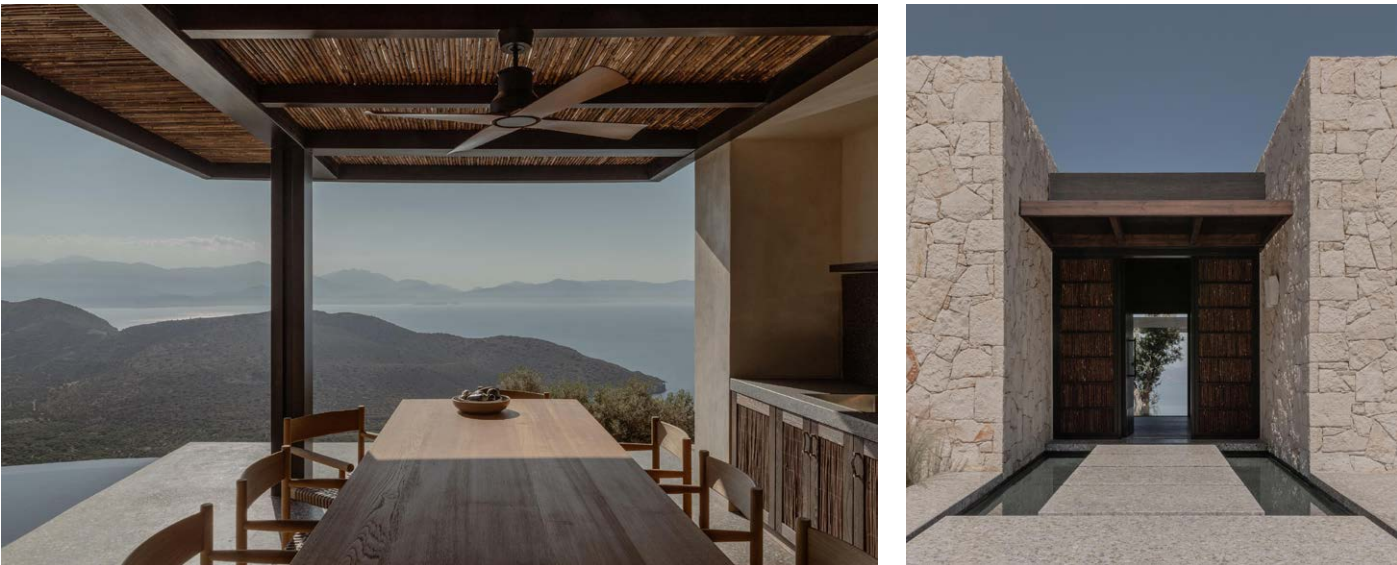
The Hill House (O Lofos)
The Hill House (O Lofos)

Project:
The Hill House (O Lofos),
Crete Island, Greece - 2022

Studio:
BLOCK722

Caneplexus's materials:
Willow natural 18-26 mm
Willow natural 6-14 mm
Mahogany bamboo 24-30 mm
M85 (handwoven mat)

Photographer: Ana Santl





Theros All Suite Hotel
Theros All Suite Hotel

Project:

Theros All Suite Hotel,
Cos Island, Greece - 2022

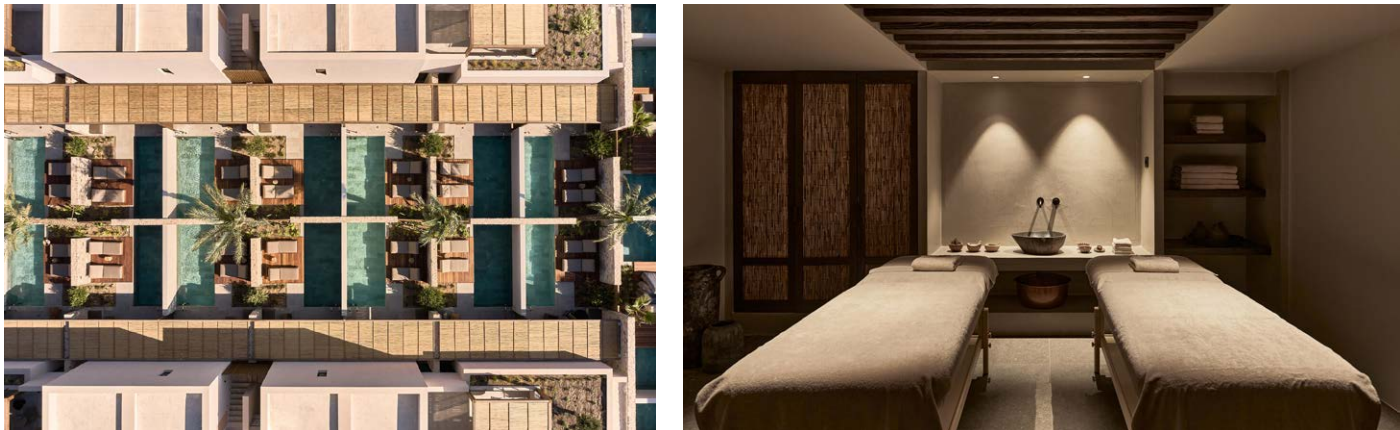
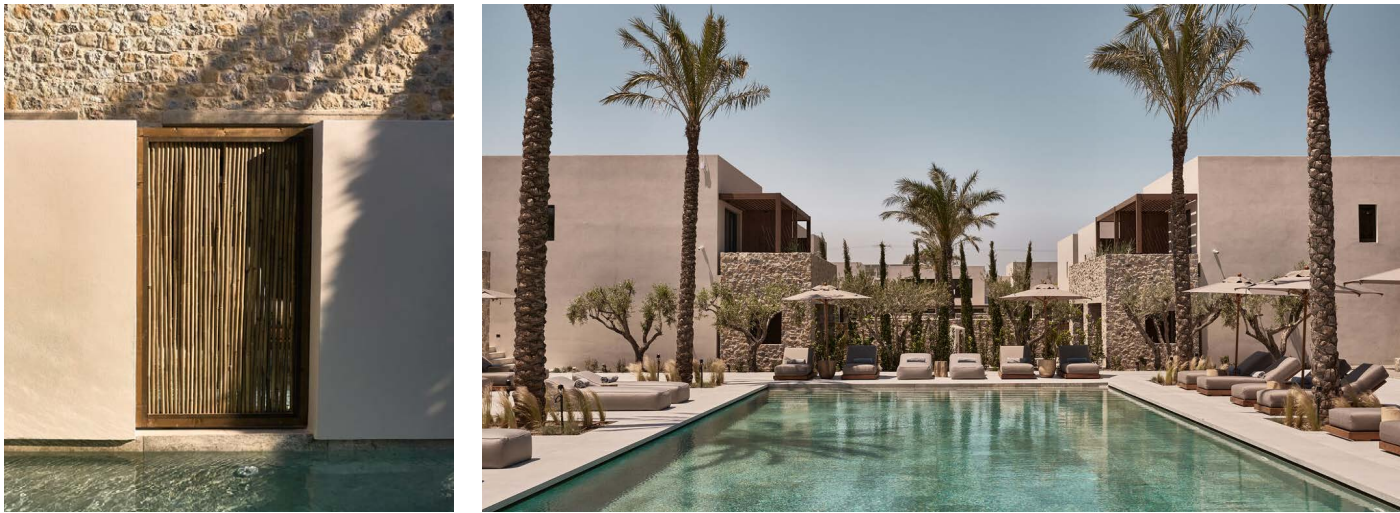
Studio:

Mastrominas ARCHitecture

Caneplexus's materials:

Bamboo tonkin 16-22 mm
Bamboo tonkin 24-28 mm
Makuti umbrellas
Cane Nigra Tai BR 6-12 mm

Photographer: Structural Engineers : Dimitrios Theodosiou, Panagiotis Valis, Stemeka Ike





Antigoni Beach Resort
Antigoni Beach Resort



Project:
Antigoni Beach Resort (renovation),
Chalkidiki, Greece - 2021

Studio:
TAKA & Partners

Caneplexus's materials:
Poles Tonkin
Poles Willow peeled
Leaves Glagah
Mat M80
Handwoven panel by willow peeled (ID 765)

Photographer: Kim Powell Photography





Peliva Nature & Suites
Peliva Nature & Suites

Project:
Peliva Nature & Suites,
Magnesia, Greece
2021

Studio:
G2lab

Caneplexus's materials:
Willow peeled 18-24 mm
Mat M24
Mat M177

Photographer: Dimitris Spyrou





Villa Apollon
Villa Apollon

Project:
Villa Apollon,
Vasiliki (Lefkada), Greece - 2021

Studio:
BLOCK722

Caneplexus's materials:
Handwoven panel by willow natural (ID 767)

Photographer: Yiorgos Kordakis





Villa Mandra
Villa Mandra

| | | |
|--|---------|-------------------------|
| Project: | Studio: | Caneplexus's materials: |
| Villa Mandra, Mykonos, Greece 2020 | KSTUDIO | Willow peeled 6-14mm |

Photographer: Claus Brechenmacher & Reiner Baumann Photography

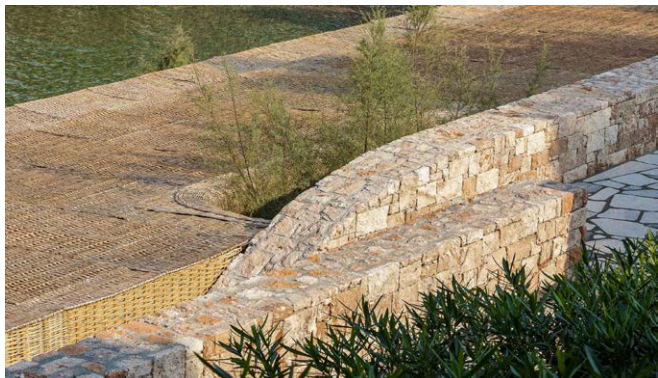




Taverna at Four Seasons Astir Palace Hotel
Taverna at Four Seasons Astir Palace Hotel

| | | |
|--|---------|---|
| Project: | Studio: | Caneplexus's materials: |
| Taverna at Four Seasons Astir Palace Hotel, Vouliagmeni, Athens, Greece 2019 | KSTUDIO | Handwoven panel by willow peeled (ID 769) |

Photographer: Peter Landers | Yiorgos Kordakis





Mitsis Rinela Beach Resort & Spa
Mitsis Rinela Beach Resort & Spa

Project:
Mitsis Rinela Beach Resort
& Spa, Greece
2018

Studio:
Elastic Architects

Caneplexus's materials:
Handwoven panel by willow peeled (ID 317)
Handwoven panel by willow peeled (ID 318)
Willow peeled 6-14 mm

Photographer: Pygmalion Karatzas





Olea All Suite Hotel
Olea All Suite Hotel

Project:

Olea All Suite Hotel,
Zakynthos Island, Greece - 2018

Studio:

BLOCK722

Caneplexus's materials:

Handwoven panel by willow natural

Green Bamboo (pole)

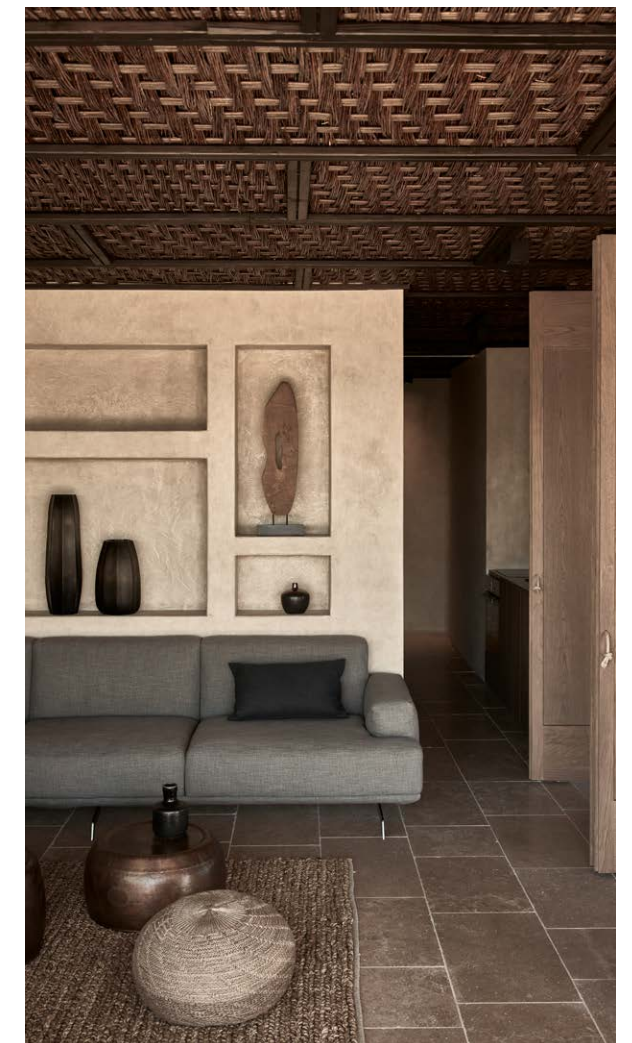
Tonkin Bamboo 24-28 mm

Bamboo Branches

Leafpalm (leaves)

M14 (handwoven mat)

Photographer: Claus Brechenmacher-Reiner Baumann





Residence in Mykonos
Residence in Mykonos

Project:
Residence in Mykonos,
Mykonos Island, Greece - 2017

Studio:
BLOCK722

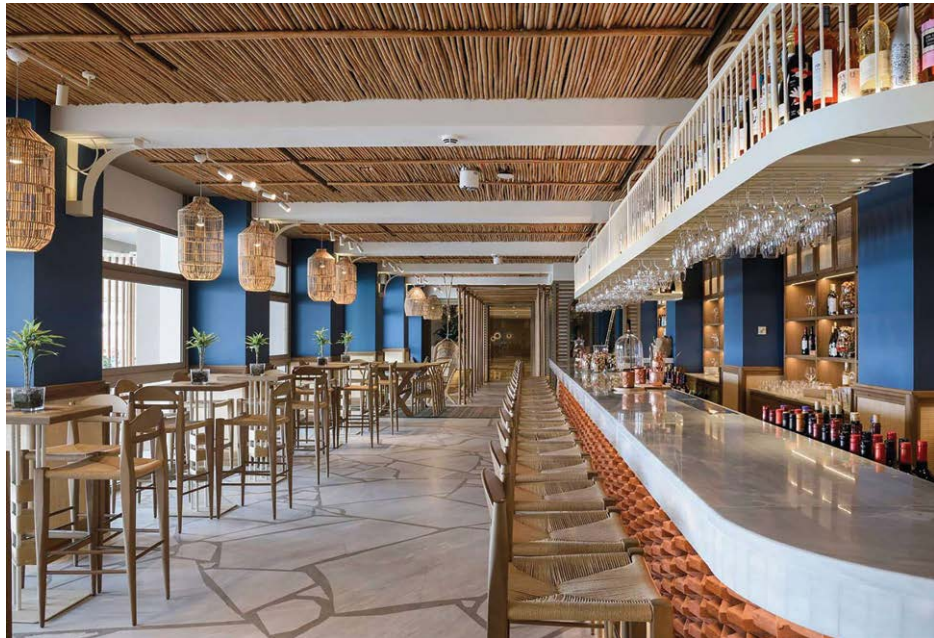
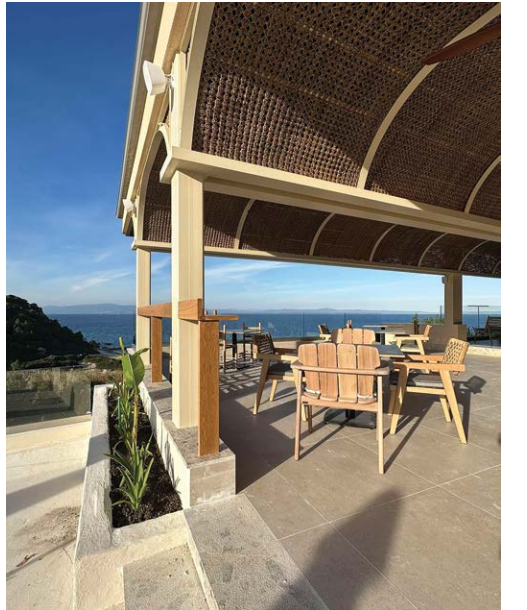
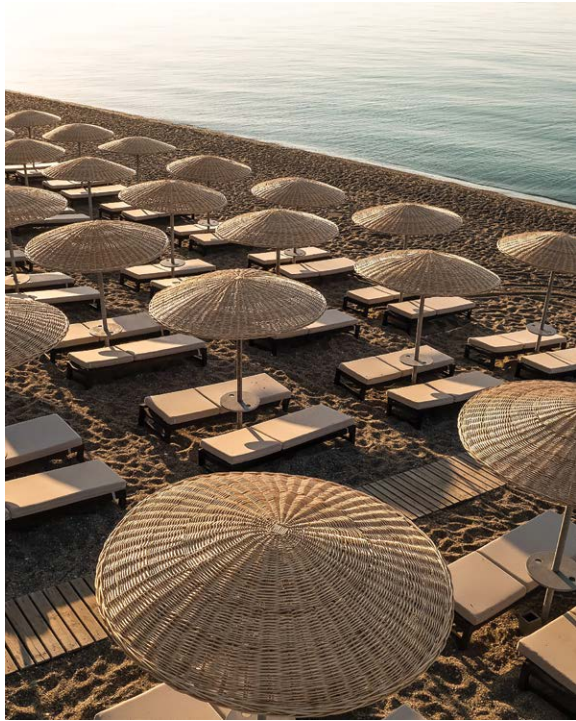
Caneplexus's materials:
Willow natural 6-14mm
Leaves Makuti

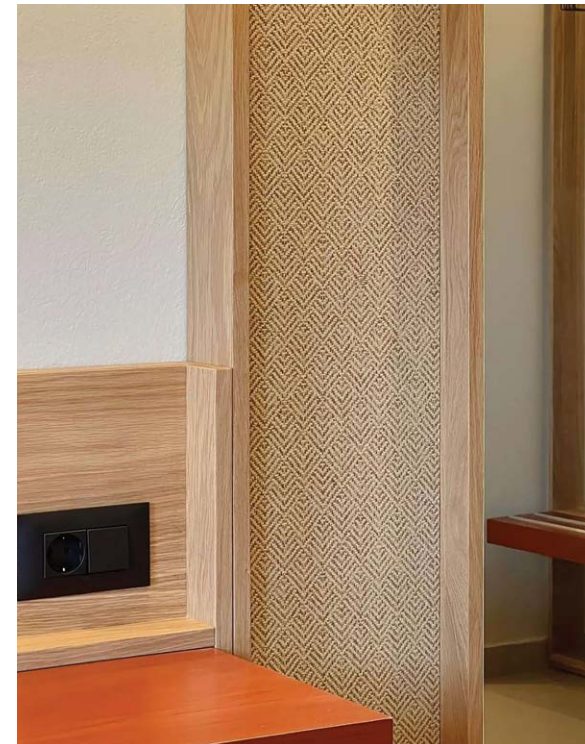
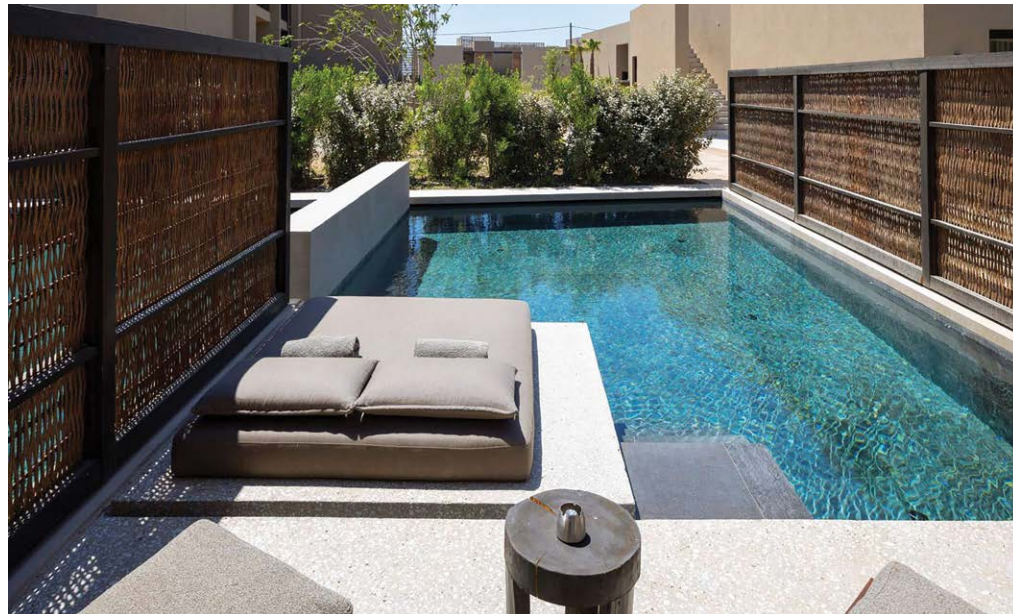
Photographer: Yiorgos Kordakis



Indicative Applications









CANEPLEXUS M & A

86 Marathonos Av. Gerakas 15344 Greece
Tel.: (+30) 210 6047060 - Mob.: (+30) 6944002400
e-mail: info@caneplexus.com - www.caneplexdesign.com